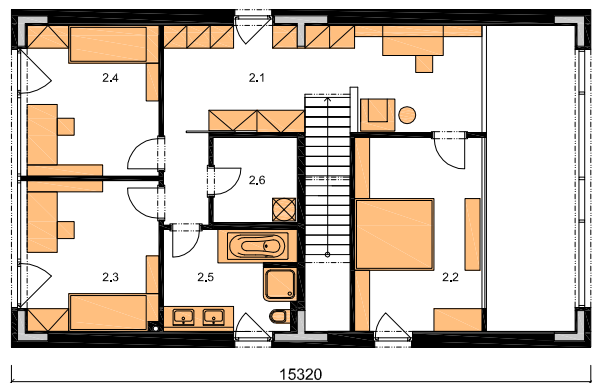


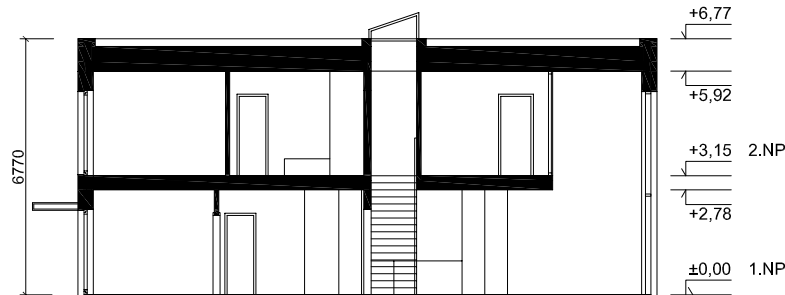
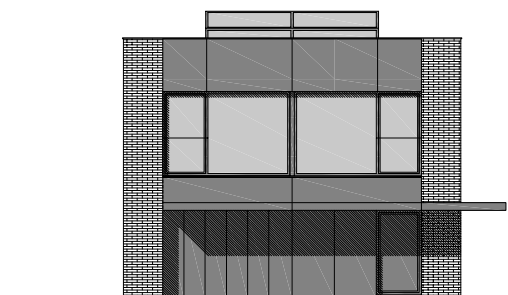
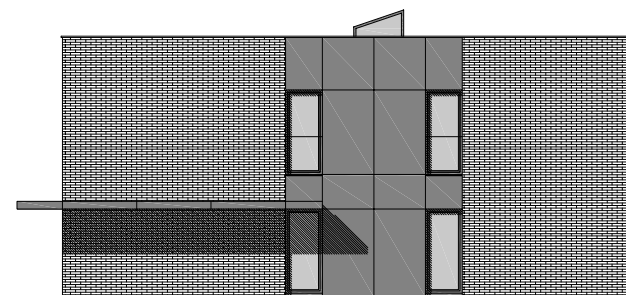
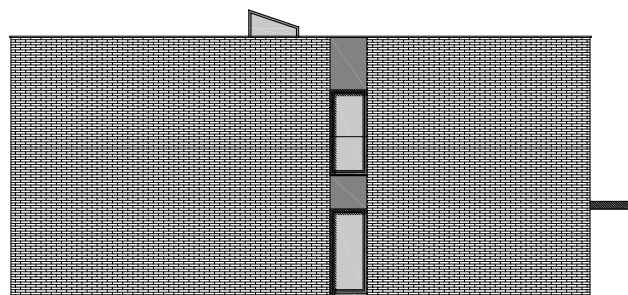
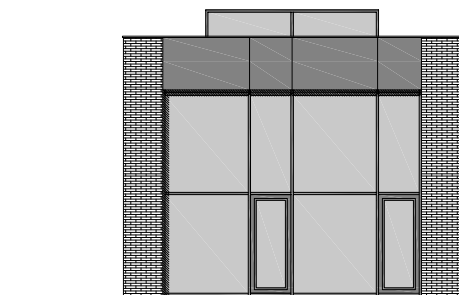
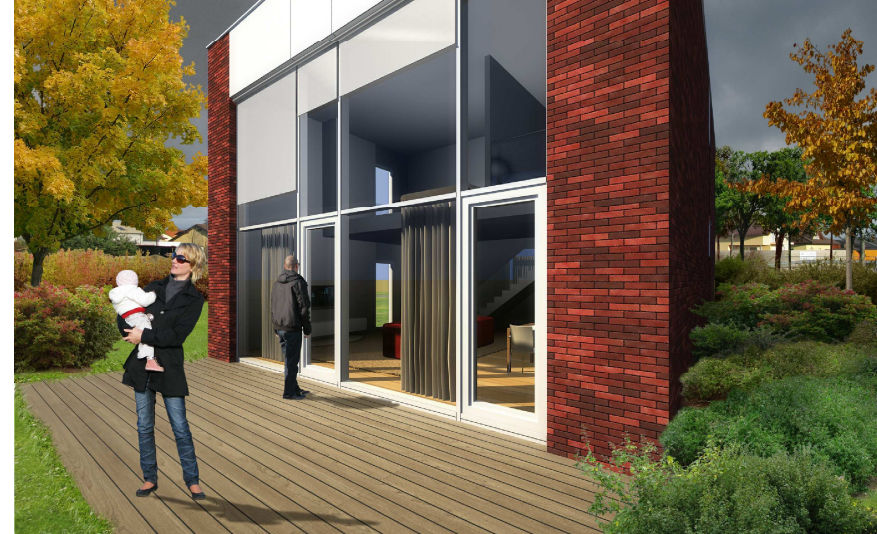
### PŘÍZEMÍ

1.1	ZÁDVEŘÍ	7,7 m <sup>2</sup>
1.2	TECH. MÍSTNOST	13,5 m <sup>2</sup>
1.3	WC	2,5 m <sup>2</sup>
1.4	ŠATNA	4,8 m <sup>2</sup>
1.5	OBYTNÝ PROSTOR	59,0 m <sup>2</sup>
1.6	GARÁŽ	26,6 m <sup>2</sup>



### PATRO

2.1	GALERIE	25,7 m <sup>2</sup>
2.2	LOŽNICE	17,5 m <sup>2</sup>
2.3	POKOJ	14,4 m <sup>2</sup>
2.4	POKOJ	14,5 m <sup>2</sup>
2.5	KOUPELNA	9,3 m <sup>2</sup>
2.6	KOMORA	5,0 m <sup>2</sup>



CELKOVÁ PODLAHOVÁ PLOCHA BEZ GARÁŽE	173,9 m <sup>2</sup>
CELKOVÝ OBESTAVĚNÝ PROSTOR	942,9 m <sup>3</sup>
ZASTAVĚNÁ PLOCHA	136,7 m <sup>2</sup>

KONSTRUKCE:	GOLDBECK (PREFA)
DISPOZICE:	4+kk
ORIENTACE VSTUPU KE SVĚTOVÝM STRANÁM (DOPORUČENÍ)	JZ, J, JV

[www.skeletsystem.cz](http://www.skeletsystem.cz)

Goldbeck Prefabeton s.r.o. 11-2010

architekt: ANLOC s.r.o.

**GOLDY 174**